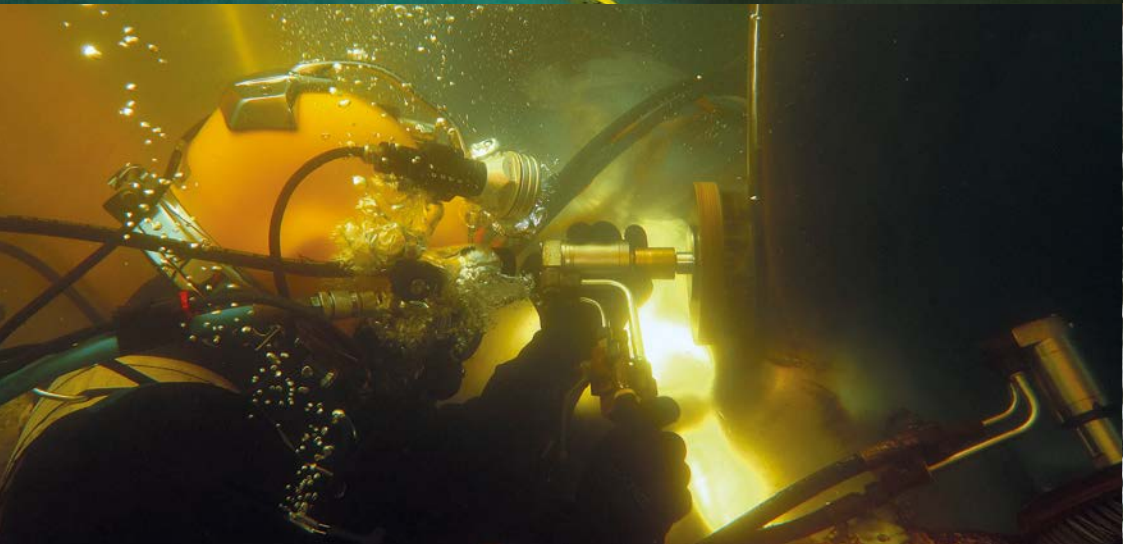
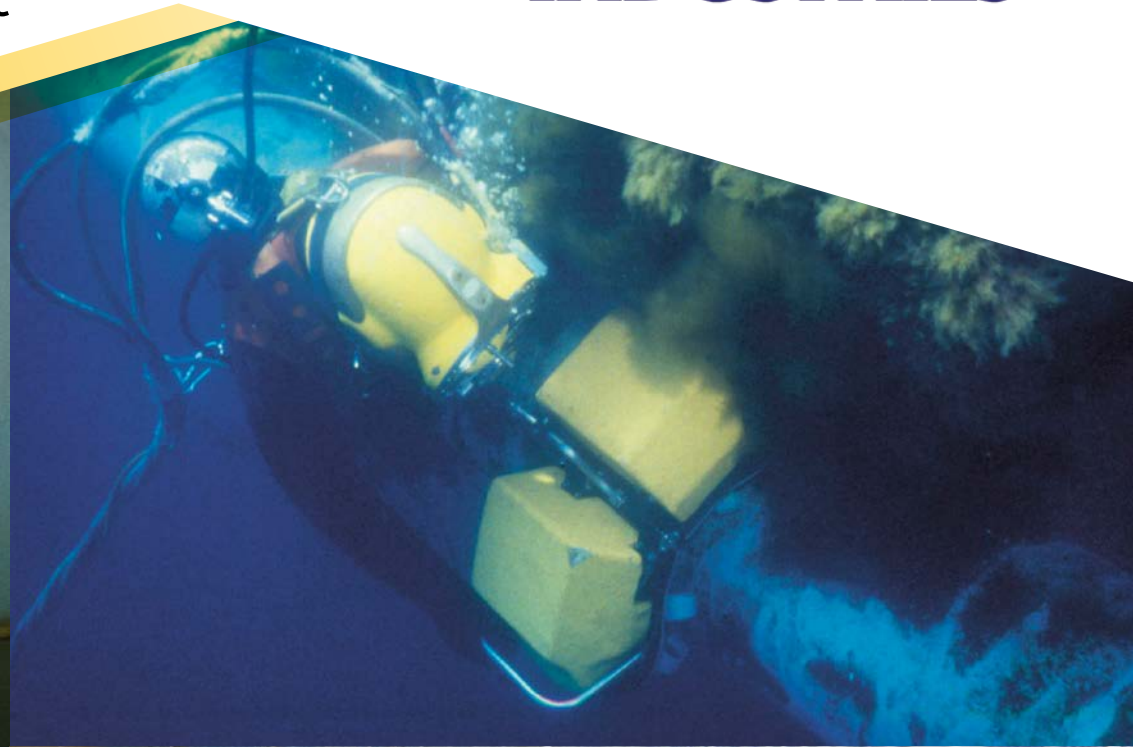
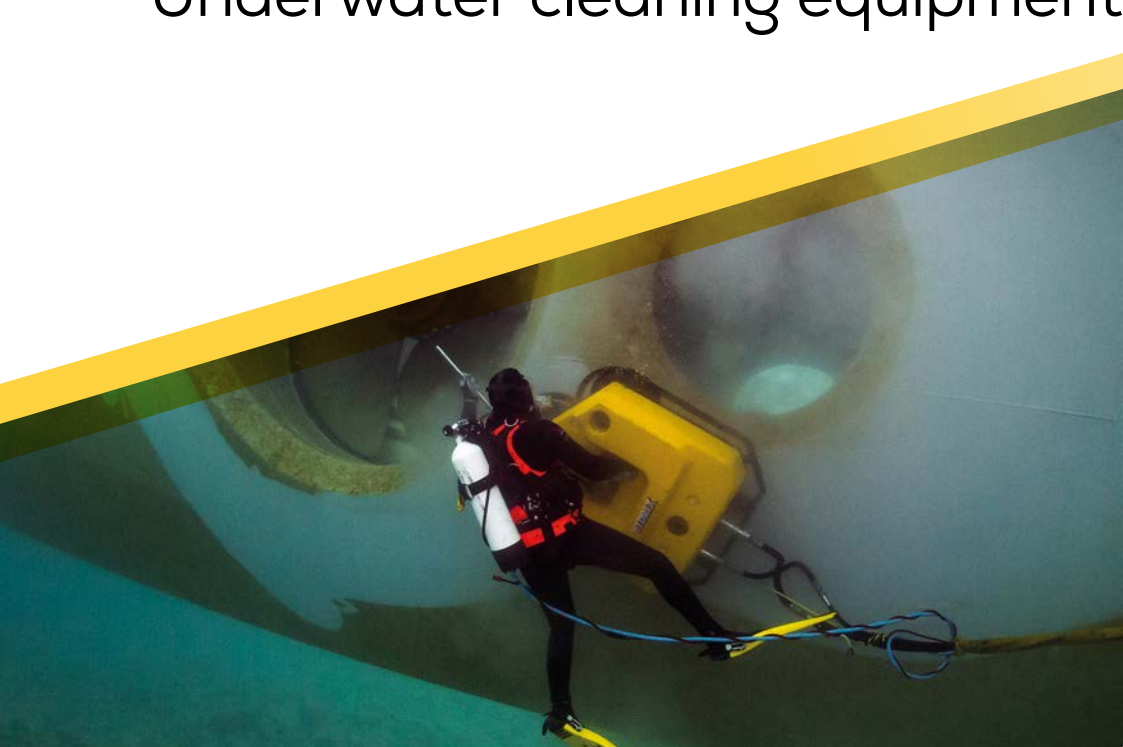


Typhoon series

Underwater cleaning equipment

**SUBSEA
INDUSTRIES**



MC111

The MC111 rotating tool is designed for cleaning boats, propellers and thrusters. It can easily be taken into recessed areas and niches.

This compact cleaning unit is ideal for multi-purpose work. With the right accessory it becomes a grinder that can be used for steel repairs.

Polishing, cutting and grinding discs are available for this unit.



Specifications MC111

Dimensions	length	30 cm
	width	18 cm
	height	6 cm

Weight	4.5 kg
--------	--------

Hydraulic requirement	20-30 l.p.m. at 140 bar
-----------------------	-------------------------



"I love the versatility of the MC111. It's almost like a Swiss army knife that you can adapt into any tool you want. Just put on the disc needed for the job and you're good to go."

Hydrex First Diver.

"The size and design of the MC131 allows you to cover nooks and crannies you cannot reach with other units. This machine is easy to transport, easy to use and cleans even the hardest to reach spots."

A diver who has used the unit on many occasions.



MC131

The MC131 is a single, powerful tool unit designed for cleaning all types of marine fouling from yachts and smaller ships to offshore oil & gas platforms. The brush rotation speed is adjustable by the diver to achieve an optimum hourly cleaning rate.

The MC131 is ideal to clean smaller areas such as bilge keels, propellers and the rudder. Niche areas that are hard to reach also pose no problem for this extremely flexible one brush unit.



Specifications MC131

Dimensions	machine brush	Ø 25 cm Ø 30 cm
Weight	in air in seawater	9 kg 1 kg
Cleaning rate		300 m ² /hour
Depth rating		70 m
Hydraulic requirement		20 l.p.m. at 140 bar

MC212

Our MC212 underwater cleaning unit has a track record of over 30 years of service. The twin tool unit consists of two halves connected by a hinge joint and is designed for cleaning light and heavy marine fouling from offshore oil & gas platforms, jetties, piles, windmills and other curved structures as well as middle sized ships.

The equipment has a self-balancing feature, which allows the operator to use the tool safely and effortlessly for extended periods.

Besides being ideal to clean curved surfaces, the MC212 is also a very good choice when cleaning middle sized ships fast and efficiently. The unit combines the maneuverability and flexibility of our smaller machines with a cleaning rate closer to our largest unit.

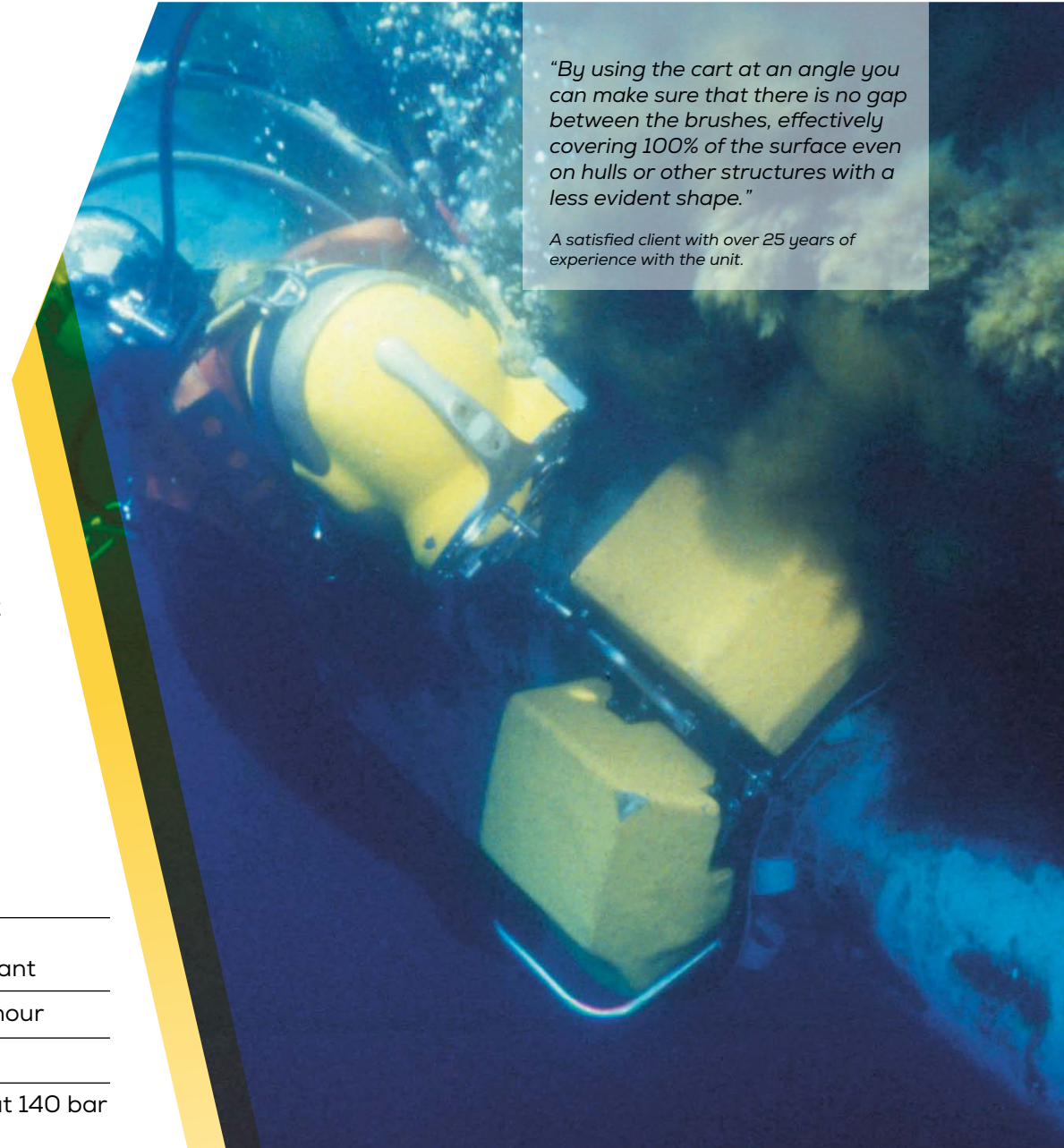


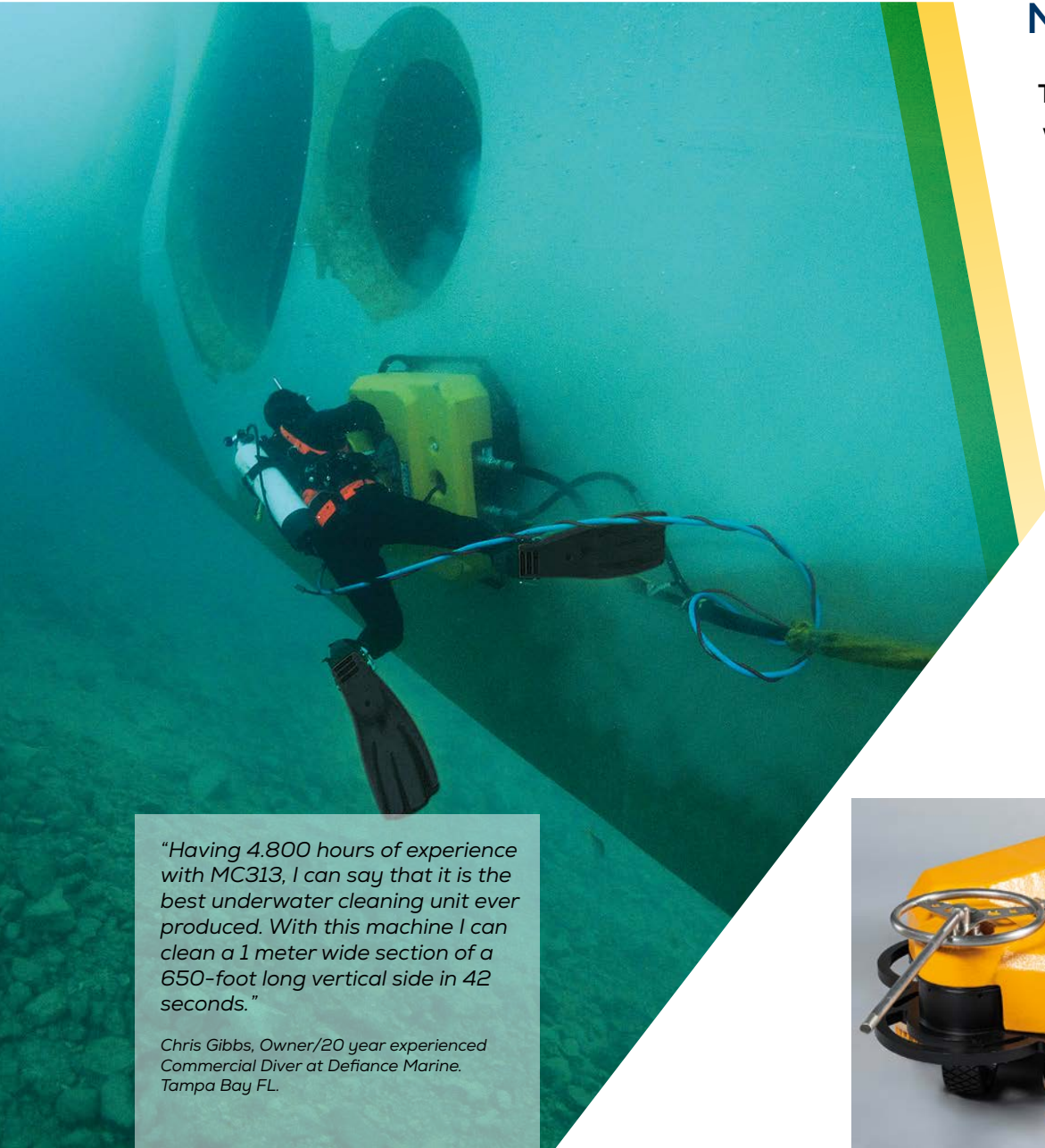
Specifications MC212

Dimensions	length	45 cm
	width	80 cm
	height	25 cm
Weight	in air	23 kg
	in seawater	1 kg buoyant
Cleaning rate		450 m ² /hour
Depth rating		70 m
Hydraulic requirement		40 l.p.m. at 140 bar

"By using the cart at an angle you can make sure that there is no gap between the brushes, effectively covering 100% of the surface even on hulls or other structures with a less evident shape."

A satisfied client with over 25 years of experience with the unit.





MC313

The unique design of the MC313 underwater hull cleaning unit will stand up to the most difficult underwater cleaning conditions encountered on various types of ships. The downward pressure of the brushes can be adjusted throughout the operation so that the contours of the hull can be cleaned.

Cleaning speeds of up to 1500 m² per hour can be established with a powerful four-wheel drive system. Both light and very heavy fouling can be removed.

Different types of fouling can now be treated with the appropriate pressure and tools. The MC313 has a very efficient cleaning record. It is designed for larger ship hulls or other large, reasonably flat surfaces.

"Having 4.800 hours of experience with MC313, I can say that it is the best underwater cleaning unit ever produced. With this machine I can clean a 1 meter wide section of a 650-foot long vertical side in 42 seconds."

Chris Gibbs, Owner/20 year experienced Commercial Diver at Defiance Marine. Tampa Bay FL.



Specifications MC313

Dimensions	length	124 cm
	width	104 cm
	height	45 cm
Weight	in air	133 kg
	in seawater	10 kg buoyant
Cleaning rate		1500 m ² /hour
Depth rating		70 m
Hydraulic requirement		80 l.p.m. at 140 bar

Hydraulic power units

PP018

The PP018 hydraulic power unit drives single and double brush units. An efficient and reliable power unit, it is easy to handle and transport.



Specifications PP018

Oil flow	20 l.p.m. at 1800 r.p.m. 40 l.p.m. at 3600 r.p.m.
Hydraulic pressure	140 bar
Engine	2-cylinder 18 HP (13.4 KW) 4 stroke petrol / gasoline
Dimensions	length 80.5 cm width 62.5 cm height 69.5 cm
Weight	105 kg

PP075

The PP075 hydraulic power unit is designed to drive all our units. It comes with a power ratings between 38.5 and 74.3 HP.



Specifications PP075

Oil flow	25 l.p.m. - 90 l.p.m.
Hydraulic pressure	160 bar
Engine	Liquid-cooled Hatz, 4-stroke 38.5 - 74.3 HP (approx. 28.7 - 55.4 KW) Diesel 2300 r.p.m.
Dimensions	length 130 cm width 108 cm height 138 cm
Weight	950 kg

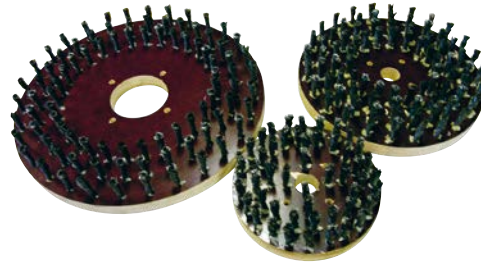
Tool selection chart

Subsea Industries has designed a complete range of cleaning discs and brushes covering the most common applications. Purpose built tools can be specially designed to order. The tools groups shown below can be used with various types of machines according to the selection table.

The tools are identified by 2 groups of 3 figures xxx-xxx. The first group defines the type of machine, the second one the type of tool.

Steel wire

Hard dense fouling.



111 - 006
131 - 907
212 - 907
313 - 907

Rilsan

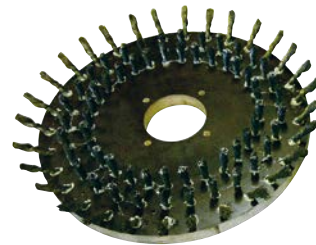
Grass, slime, small barnacles.



111 - 001
131 - 909
212 - 909
313 - 909

Steel grass

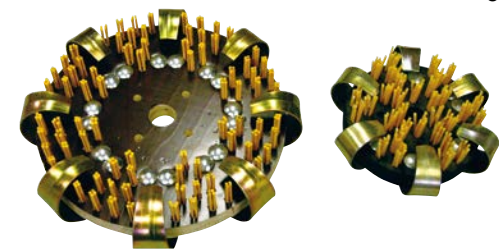
Thick dense grass.



131 - 908
212 - 908
313 - 908

Rilsan scraper

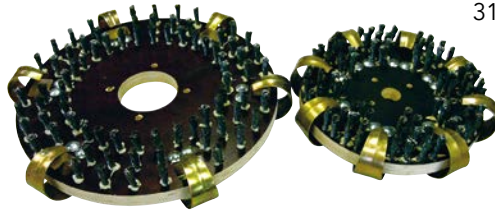
Barnacles.



131 - 902
212 - 902
313 - 902

Steel scraper

Very severe dense fouling.



131 - 903
212 - 903
313 - 903

Polyprop

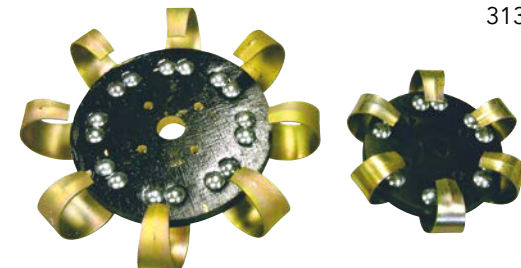
Grass, slime.
(very fragile surfaces)



111 - 005
131 - 910
212 - 910
313 - 910

Standard scraper

Extreme hard, dense fouling.



131 - 901
212 - 901
313 - 901



Underwater cleaning equipment

Our range of Typhoon underwater cleaning systems is available for various applications: from propellers on small pleasure boats to the hulls of 400 meter container ships and large offshore platforms.

Light slime and very thick layers of heavy marine growth can be removed.

The cleaning units can be used effortlessly and safely for extended periods of time.

They are easy to maneuver and will help you clean all niche areas.

All units in the series are offered separately or with a complete support system including umbilical, tools and hydraulic power unit.

For more information, consultations, or quotes, please contact us:

**SURSEA
INDUSTRIES**
PROTECTION AND PERFORMANCE

Headquarters
+32 3 213 53 18
info@subind.net
Asiadok-Oostkaai 9
2030 Antwerp
Belgium

subind.net



Copyright ©2025 by Subsea Industries.